

## - APPLICATION INFORMATION -

### PRO VERSION

SageKey Access 2007 Deployment Wizard - Pro Version [2007 Test Project Pro.awz]

File Licenses Help

**SageKey**

Enter some information about your application Quick Build

Company Name:

Product Name:

Application Title:

Version:

Installation Directory:

Program Group:

Step 1 of 8 - Application Information

Help Cancel < Back Next > Create

Enter All the basic information about your company and product here. These Values will be used throughout the install to represent your application.

- Company Name
- Product Name
- Application Title
- Version
- Installation Directory
- Program Group

For more information on each field, right click the corresponding label in the Wizard and select "What's this?"

## QUICK BUILD

This will confirm that all build properties are correct and if so will build the Install. If an incorrect property is found, the Wizard will open the step where the problem was found.

The Quick Build feature is most useful for rebuilding an existing install when you have updated one of your source files, such as the front-end database, and just want to rebuild the install without stepping through each page of the wizard.

**Important Note:** Any previous build files will be overwritten by a Quick Build.

## INSTALLATION DIRECTORY

The 'Installation Directory' drop-down has a default of <COMMON\_APP\_DATA>\Company\Product.

You can edit this and change it, but do not change or add new variables.

(i.e.: Don't change or remove <COMMON\_APP\_DATA> or any other words enclosed in less than (<) or greater than (>) brackets.)

This will cause the Installation build to fail.

## CHANGES TO THE INSTALLATION DIRECTORY FOR VISTA AND LATER

Microsoft has enhanced the security within Vista and one of the changes is that applications no longer have the ability to write to the Program Files directory by default. Microsoft formally recommends that all files that are written to by an application be placed in COMMON\_APP\_DATA ("C:\ProgramData" on Vista).

You can change this default location to any of the other choices in the drop-down list, but it is recommended that you use COMMON\_APP\_DATA.

## DIRECTORY VARIABLES OVERVIEW

| Directory Variable      | Description   | Typical Path (XP, 2000)  | Typical Path (Vista)              |
|-------------------------|---|--|-----------------------------------|
| <b>COMMON_APP_DATA</b>  | This is the recommended location to store application data for all users.   | C:\Documents and Settings\All Users\Application Data               | C:\ProgramData                    |
| <b>LOCAL_APP_DATA</b>   | This is the location to store per-user application data that will not roam if using roaming profiles.               | C:\Documents and Settings\username\Local Settings\Application Data | C:\Users\username\AppData\Local   |
| <b>ROAMING_APP_DATA</b> | This is the location to store per-user application data that will roam with the user.                               | C:\Documents and Settings\username\Application Data                | C:\Users\username\AppData\Roaming |
| <b>PROGRAM_FILES</b>    | This is the location to install executable files.   | C:\Program Files   | C:\Program Files                  |
| <b>MAIN_DRIVE</b>       | The root of the drive that Windows is installed. Use of this as a default installation location is not recommended. | C:\  | C:\                               |

## - APPLICATION FILES -

### PRO VERSION

SageKey Access 2007 Deployment Wizard - Pro Version [2007 Test Project Pro.awz]

File Licenses Help

**SageKey**

Locate the files for your application

Frontend Application: D:\PDW Testing\MSI Wizard\2007\Testing Dbs\Northwind\_2007\_FrontEnd\_Ref Browse

Do not include Frontend Application

Scan for References

Backend Database: D:\PDW Testing\MSI Wizard\2007\Testing Dbs\Northwind\_2007\_BackEnd.accd Browse

This application has no backend database

Create Client/Server install

Access Runtime Exe file: D:\2007 Runtime - English\AccessRuntime.exe Browse

Do not include runtime with install.

Template file: C:\Program Files\SageKey Software\Access 2007 Deployment Wizard\Support File Browse

Custom Help File: D:\PDW Testing\MSI Wizard\2007\Other Source files\custom Help file.txt Browse

End User License Agreement file: D:\PDW Testing\MSI Wizard\2007\Other Source files\custom Licence file.txt Browse

Step 2 of 8 - Application Files

Help Cancel < Back Next > Create

### Front-end Application

Click 'Browse' to locate the files, or type in the path to your Frontend Application files. The files must be selected here or marked to not be included before you can proceed to the next step.

You can check the box "Do not include Frontend Application" if you would rather add the files in the Support files step (to further customize the install location) or to create an install for the runtime only.

By default the Wizard will scan for references in your Frontend Application, which will be automatically added as support files in the next step. If you do not wish to scan your Frontend Application for references, simply uncheck this box.

### Back-end Database

Click 'Browse' to locate the files, or type in the path to your Backend files. The files must be selected here or marked to not be included before you can proceed to the next step.

To mark that you are not including a Backend, simply check the box next to 'This application has no back-end database.' The text field will go blank and the browse button will no longer be available.

By selecting the Create Client/Server install the wizard inserts the appropriate dialog allowing the End User to select a Full, Workstation, or Server installation.

### Access Runtime Exe File

Click 'Browse' to locate the files, or type in the path to your Runtime files. The files must be selected here or marked to not be included before you can proceed to the next step.

To mark that you do are not including a Runtime, simply check the box next to 'Do not include runtime with install.' The text field will go blank and the browse button will no longer be available.

### Template File

This field contains the default path to the Wizard Support files and points to the template file Template.msi. If you wish to use a different template file (advanced users only) click 'Browse' to locate the file, or type in the path to your new template file. The new template file must be in the same location as the contents of the Support Files folder found within the SageKey Access Deployment Wizard directory (StartAccess, MakeCab.exe, etc...)

### Custom Help File

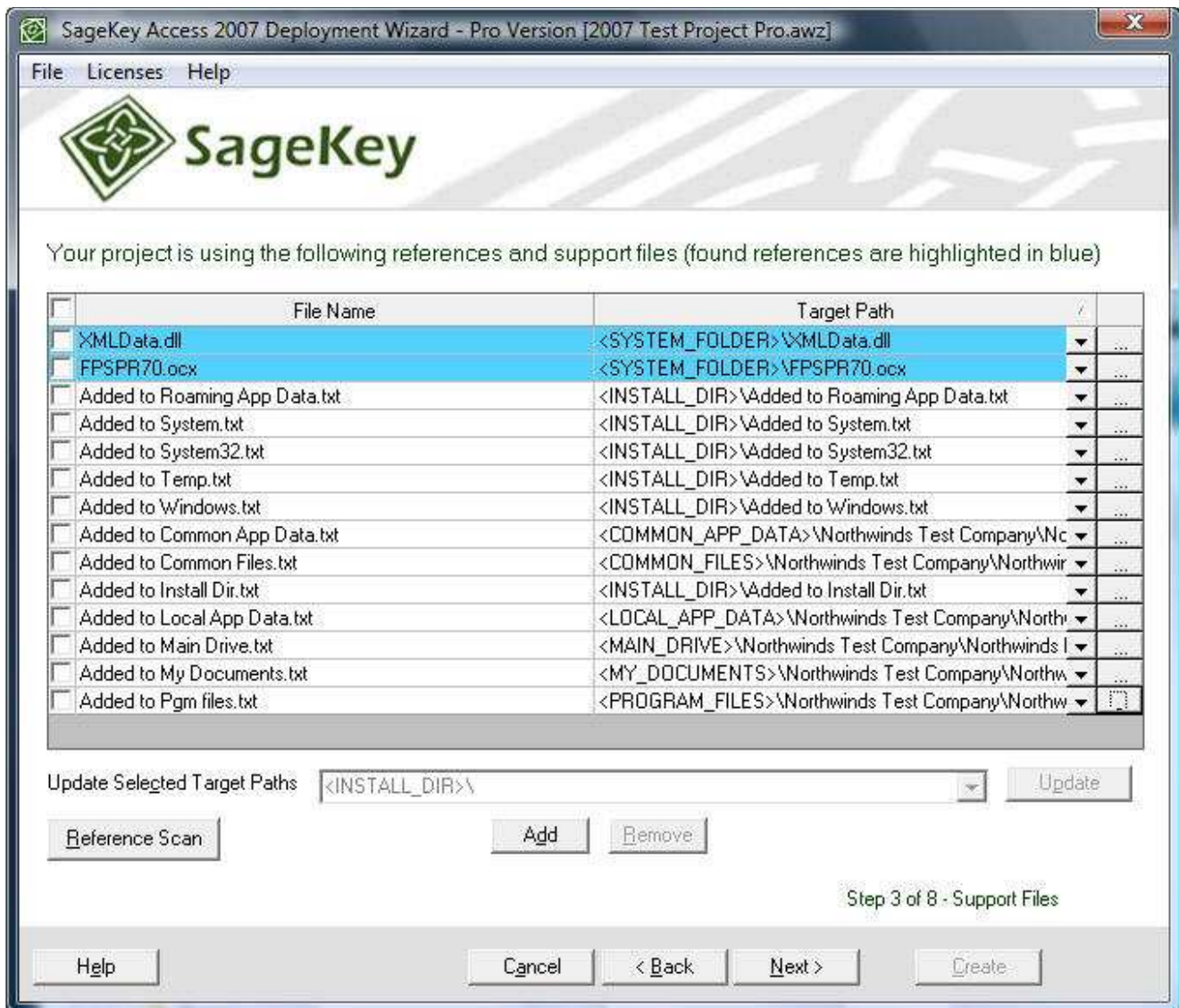
Click 'Browse' to locate the files, or type in the path to your Help file. This field can be left blank if you do not wish to include a help file.

### End User License Agreement File

Click 'Browse' to locate the files, or type in the path to your End User License Agreement File. This field can be left blank if you do not wish to include an End User License Agreement File.

## - SUPPORT FILES -

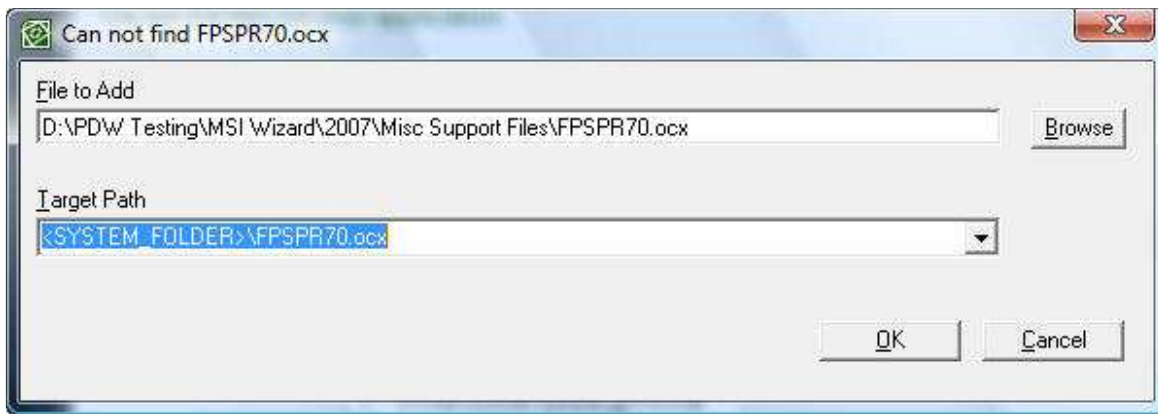
PRO VERSION



When you click 'Next' on the previous step of the Wizard, if you have the Box next to Scan for References checked, the Wizard will open your specified Frontend file and scan it for references. If it finds any, they are added here. You can remove any erroneous ones, or, if you make changes at a later time, click the 'Reference Scan' button to refresh the list.

The Wizard will try to determine the target path for each of these, but you can change the installation path by editing the Target Path combo field. You can edit this and change it, but do not change or add new variables. (i.e.: Don't change or remove <PROGRAM\_FILES> or any other words enclosed in less than (<) or greater than (>) brackets.) This will cause the Installation build to fail.

If the Wizard finds a reference to a file that it can not find on your machine it will show the following dialog.



Enter the location of the file and the Target Path to be sure the reference is included in the install.

Your project is using the following references and support files (found references are highlighted in blue)

| File Name                            | Target Path                    |
|--------------------------------------|--------------------------------|
| <input type="checkbox"/> FPSPR70.ocx | <SYSTEM_FOLDER>\FPSPR70.ocx    |
| <input type="checkbox"/> XMLData.dll | <COMMON_APP_DATA>\FPSPR70.ocx  |
|                                      | <LOCAL_APP_DATA>\FPSPR70.ocx   |
|                                      | <MAIN_DRIVE>\FPSPR70.ocx       |
|                                      | <PROGRAM_FILES>\FPSPR70.ocx    |
|                                      | <ROAMING_APP_DATA>\FPSPR70.ocx |
|                                      | <WINDOWS>\FPSPR70.ocx          |
|                                      | <SYSTEM_FOLDER>\FPSPR70.ocx    |
|                                      | <COMMON_FILES>\FPSPR70.ocx     |
|                                      | <INSTALL_DIR>\FPSPR70.ocx      |
|                                      | <TEMP>\FPSPR70.ocx             |
|                                      | <MY_DOCUMENTS>\FPSPR70.ocx     |

Note: Found Reference files are highlighted in blue.

Any additional files your application needs that are not included as references are added here as well. Clicking the 'Add' button will bring up the Add File dialog.

You can select multiple files to add in this dialog. Once you have selected the file or files you want to add to the install, click the Open button to add these files.

By Default, each file you selected will have a target directory of <INSTALL\_DIR>\filename. You can change the target directory for multiple files by checking the checkbox beside each file to change and entering a new target path in the "Update Selected Target Path" combo box. Press the Update button to update the target path of the selected files.

Example: Pressing the Update Target Path in this dialog will update the target path for Register.dll and Register.exe to <PROGRAM\_FILES>\Sagekey Software\MSI 2007 Wizard Demo Product\

If you decided not to include your Frontend or Backend files in with the other Application files you can add them here. When adding them in this step you can further customize where the files are installed to.

If you want to delete an additional file, check the box to the left of its line to select it and press the Remove button.

#### File Details

At the right hand side of each file row, there is a button which will display the File Details dialog.



This dialog allows you to specify the Source Path of the file in the case that you have moved the source files for your project. Also, you can check the "Show Advanced Options" checkbox to view the advanced options for the specific file.

**Please Note:** Changing any of the advanced fields is only recommended for users who are very familiar with msi.



Attributes: This is the Attributes column for the Component this file will belong to. For more information, see: <http://msdn2.microsoft.com/en-us/library/aa368007.aspx>

Install Condition: This is the Condition column for the Component this file will belong to. For more information, see: <http://msdn2.microsoft.com/en-us/library/aa368007.aspx>

**Register File:** A reference found by the Wizard that can be registered this check box will be checked by default. When adding a file manually be sure to check if it is to be registered or not.

**Note:** You can add a custom icon for you program when it is shown in the Add/Remove Programs (Programs and Features on Vista) by naming the icon arpicon.ico and installing it in the INSTALLLOCATION.

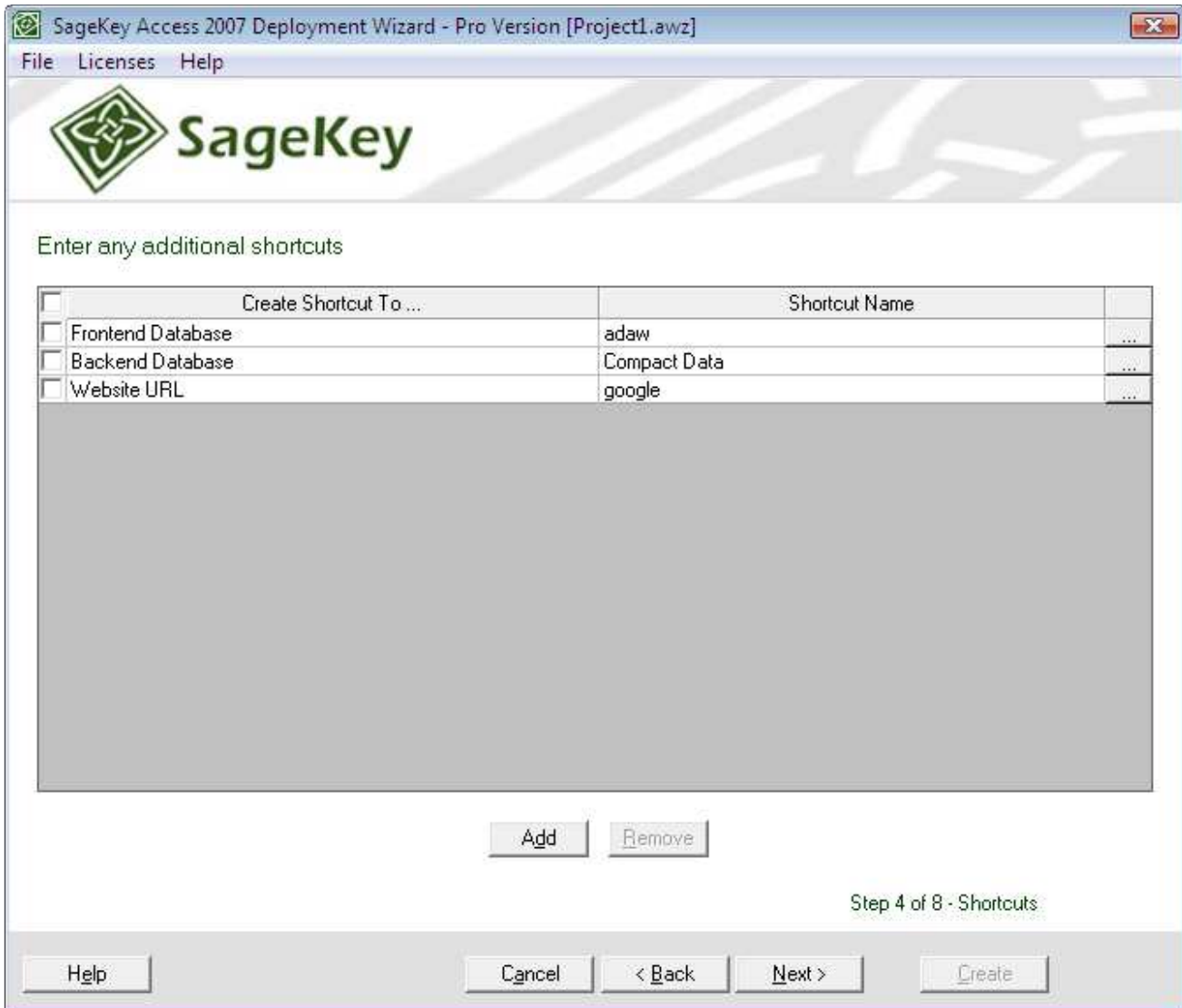
## Directory Variables Overview

| Directory Variable | Description  | Typical Path   |
|--------------------|--|--|
| COMMON_APP_DATA    | This is the recommended location to store application data for all users.  | C:\Documents and Settings\All Users\Application Data               |
| LOCAL_APP_DATA     | This is the location to store per-user application data that will not roam if using roaming profiles.  | C:\Documents and Settings\username\Local Settings\Application Data |
| ROAMING_APP_DATA   | This is the location to store per-user application data that will roam with the user.  | C:\Documents and Settings\username\Application Data                |
| PROGRAM_FILES      | This is the location to install executable files.  | C:\Program Files   |
| MAIN_DRIVE         | The root of the drive that Windows is installed. Use of this as a default installation location is not recommended.  | C:\  |
| COMMON_FILES       | This is the location of common program files.  | C:\Program Files\Common Files                                      |
| INSTALL_DIR        | This is the Installation Directory set in the Application Information section of the wizard.<br><br>If the Installation directory is changed, then any support files set to INSTALL_DIR will be automatically updated with the changed Installation directory when the msi is created. |  |
| MY_DOCUMENTS       | The current user's My Documents folder.  | C:\Documents and Settings\user\My Documents                        |
| SYSTEM_FOLDER      | The Windows System folder.   | C:\Windows\System32  |
| WINDOWS            | The Windows folder.  | C:\Windows   |



## - SHORTCUTS -

### PRO VERSION



On this step you can add shortcuts to any file that is already part of the install.

If you selected a Frontend and/or Backend database in the early steps of the Wizard, shortcuts will be automatically added for them here. Shortcuts will also be added as default for a help file if you added one.

Click Add to create a new shortcut.

Press the "... " button to edit the Shortcut Values

Shortcut File: Frontend Database

Shortcut Name: application

Shortcut Destination: Desktop & Start Menu

Shortcut Icon:  Browse

Shortcut Cmd Line: /runtime /excl

Alt Workgroup File: Use default workgroup file

Use Start Access:

Start Access Cmd Line:

Store Start Access Cmd Line in Registry:

OK Cancel

## SHORTCUT VALUES:

|   |   |
|---|---|
| <b>Shortcut File</b>                        | Select the type of file you would like to make a shortcut for.  |
| <b>Shortcut Name</b>                        | Enter a name for the shortcut.  |
| <b>Shortcut Destination</b>                 | Choose where you would like the shortcut placed (Desktop, Start Menu or both)   |
| <b>Shortcut Icon (Optional)</b>             | Browse to, or type in a path to an icon file. The selected Icon will be displayed beside the browse button.                 |
| <b>Shortcut Command Line (Optional)</b>     | Enter any command line information for the shortcut.  |
| <b>Alt Workgroup File</b>                   | Select from the dropdown list a file ending in .mdw that has been added to your install, or use the default workgroup file. |
| <b>Start Access</b>                         | Check this box to have the shortcut open a database through StartAccess.  |
| <b>Start Access Command Line (Optional)</b> | If StartAccess is being used enter any command line options for it here.  |
|   | If this box is checked the shortcut command line will be stored in the  |

**Reg Key**

registry.

If you select Website URL in the "Create Shortuct to..." column then the Shortcut Values will be:

The screenshot shows a dialog box titled "Shortcut Details" with the SageKey logo. The fields are as follows:

- Shortcut File:** Website URL (dropdown menu)
- Shortcut Name:** BEST SITE changed (text input)
- Shortcut Destination:** Desktop (dropdown menu)
- Shortcut Icon:** (empty text input) and a **Browse** button
- Website URL:** www.google.ca (text input)

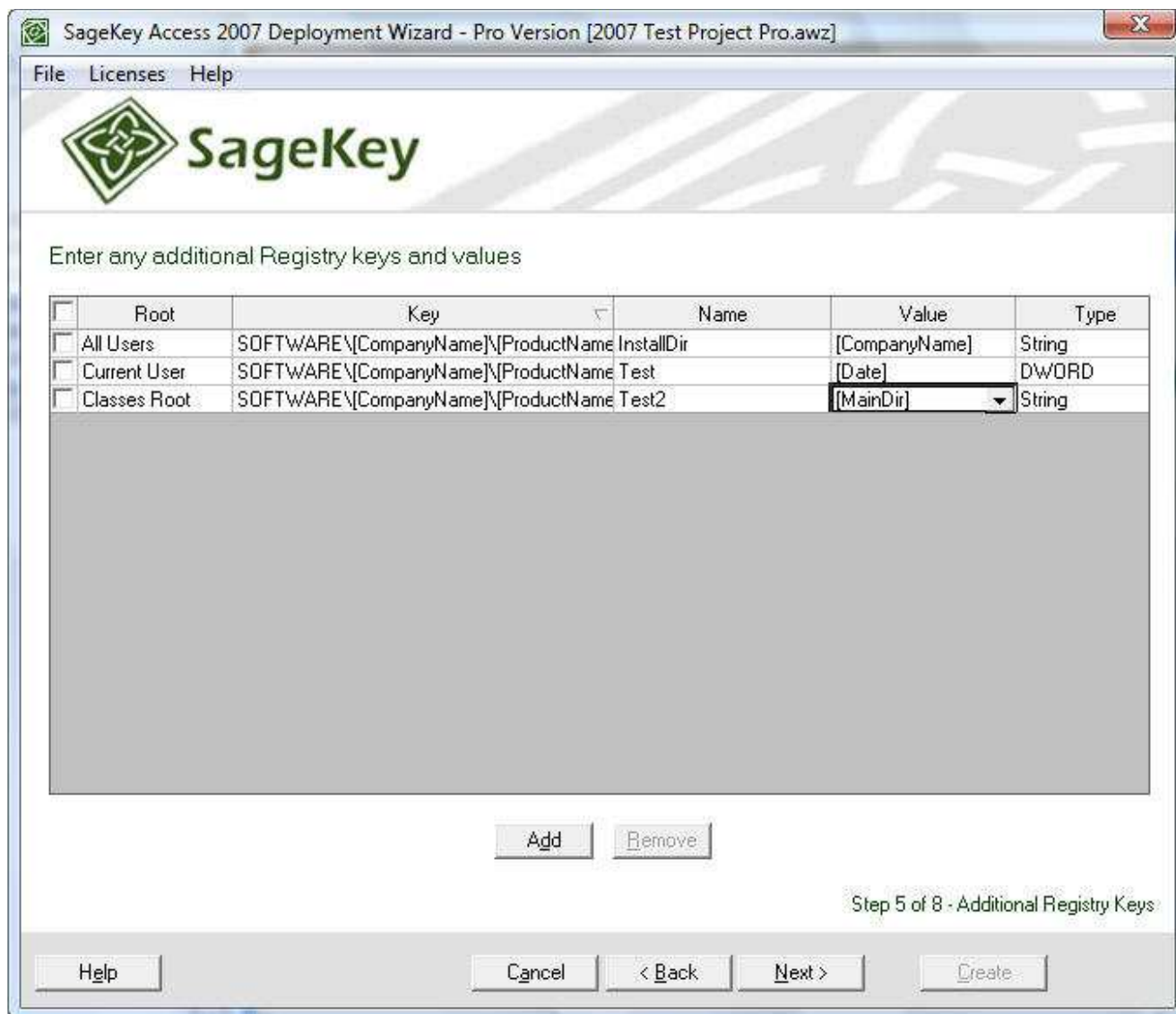
Buttons at the bottom: **OK** and **Cancel**.

- Shortcut File** Select the type of file you would like to make a shortcut for.
- Shortcut Name** Enter a name for the shortcut.
- Shortcut Destination** Choose where you would like the shortcut placed (Desktop, Start Menu or both)
- Shortcut Icon (Optional)** Browse to, or type in a path to an icon file. The selected Icon will be displayed beside the browse button.
- Website URL** Enter the Web URL you would like the shortcut to point to.

If you want to delete a shortcut, check the box to the left of its line to select it and press the Remove button.

## - ADDITIONAL REGISTRY KEYS -

PRO VERSION



Click the Add button to add a new Registry key row.

### ADDITIONAL REGISTRY KEY VALUES:

In the first column, select the registry root of the new registry key.

|      |              |                    |
|------|--------------|--------------------|
| Root | Classes Root | HKEY_CLASSES_ROOT  |
|      | Current User | HKEY_CURRENT_USER  |
|      | All Users    | HKEY_LOCAL_MACHINE |

In the second column, select or enter the registry key. If the selected root is "Current User" or "All Users", the key column defaults to "SOFTWARE\[CompanyName]\[ProductName]".

Key

The [CompanyName] variable is set the Company Name field that was entered in Application Information and the [ProductName] variable is set to the Product Name field that was entered on in Application Information.

Name

In the third column, enter the name of the registry value.

In the fourth column select or enter the data for the registry value. This field is a combo box where you can select from some installer variables or enter your own value.

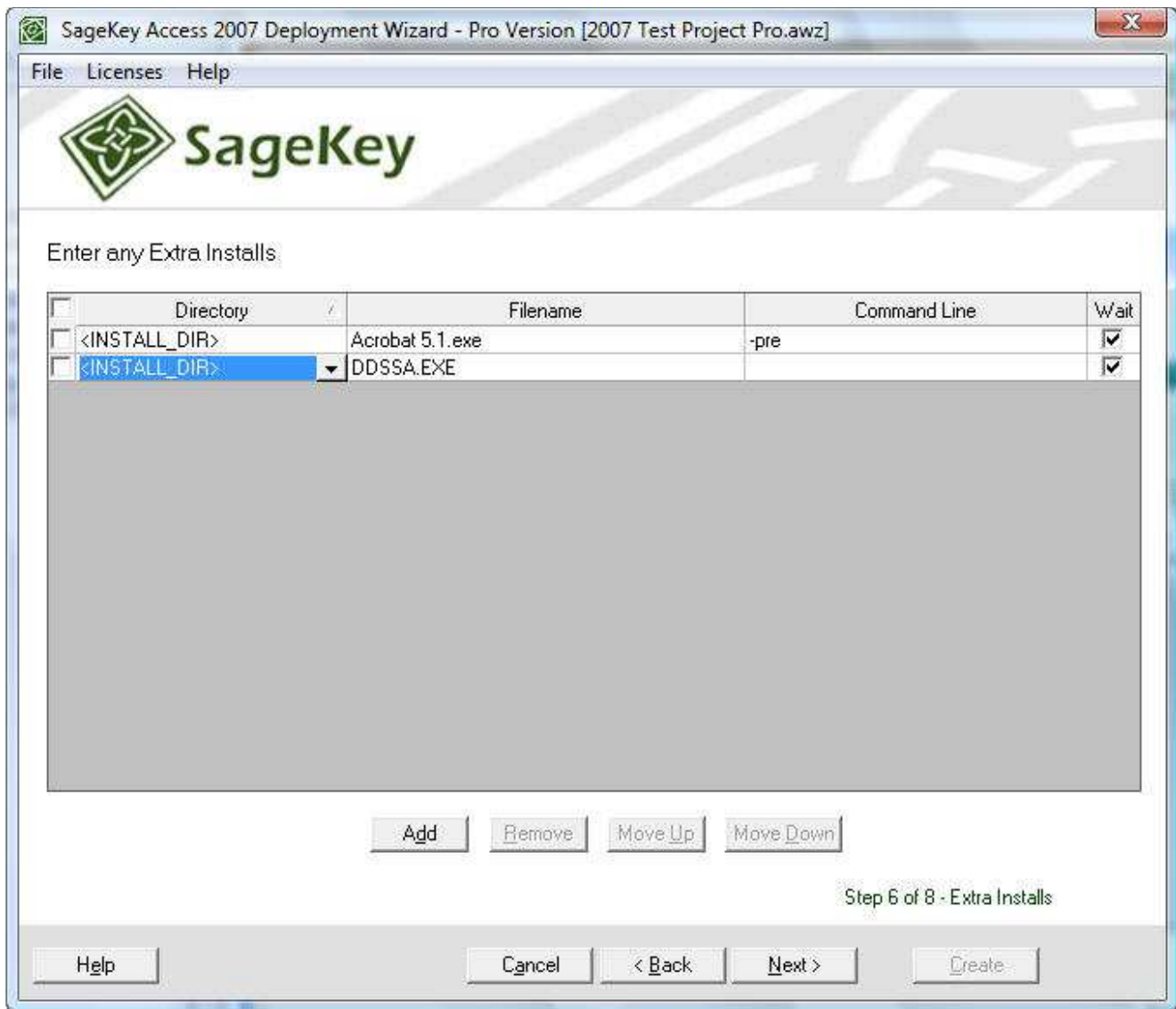
|       | Installer variable | Description  |
|-------|--------------------|--|
| Value | [CompanyName]      | Your Company Name entered in Application Information       |
|       | [ComputerName]     | The name of the computer that the install is occurring on. |
|       | [Date]             | The date at installation time.                             |
|       | [LogonUser]        | The username logged into the computer during installation. |
|       | [MainDir]          | The installation directory.                                |
|       | [ProductName]      | The Product Name entered in Application Information        |
|       | [ProductVersion]   | The Version entered in Application Information             |

Type

In the fifth column, select the type of the value. This can either be String (REG\_SZ) or DWORD (REG\_DWORD).

## - EXTRA INSTALLS -

PRO VERSION



On this step you can add files that you would like to execute on the target machine either before or after the installation of your Access application.

Extra Installs are run in the order they are displayed in the list. You can move an Extra Install up or down in the list using the Move Up and Move Down buttons.

Click Add to create an Extra Install

#### EXTRA INSTALL VALUES:

Directory

Select the directory that the Install file you wish to run is in on the target machine. Selecting <INSTALL\_SOURCE> lets you add a new file to the install.

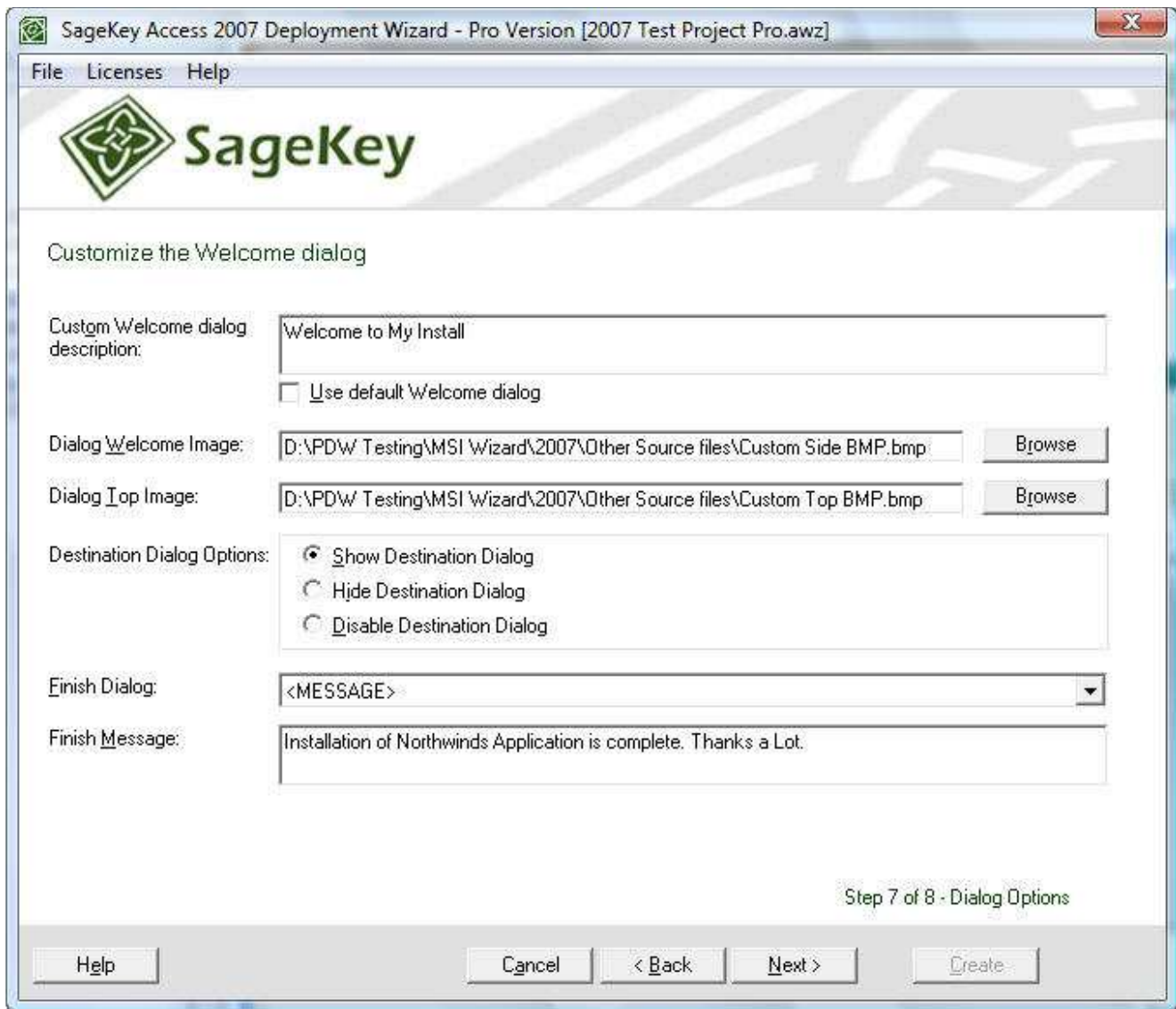
After selecting the first part of the location of the file as the Directory Value, enter the rest of the path and file name here. For example for a

|              |   |
|--------------|---|
| Filename     | file found in "C:\Program Files\Sagekey\Install.exe" the user would select <PROGRAM_FILES> from the combo box and enter either \Sagekey\Install.exe or Sagekey\Install.exe into the Filename field.   |
| Command Line | If <INSTALL_SOURCE> was selected as the Directory, click this field to add a file to the install which will be executed either before or after the Access application install.<br><br>Enter any command line parameters you would like run with the extra install. To run your install as a prerequisite (before anything else installs) enter -pre as the first entry in the Command Line field. |
| Wait         | Check this box if you want this Extra Install to complete before running the next Extra Install in the list.  |

If you want to delete an Extra Install, check the box to the left of its line to select it and press the Remove button.

## - DIALOG OPTIONS -

PRO VERSION



#### Custom Welcome Dialog Description

Enter text you would like to be used for a Custom Welcome Dialog. If you do not want to use a Custom Welcome Dialog you can use the default dialog by checking the 'Use default Welcome dialog' check box.

#### Dialog Welcome Image Bitmap

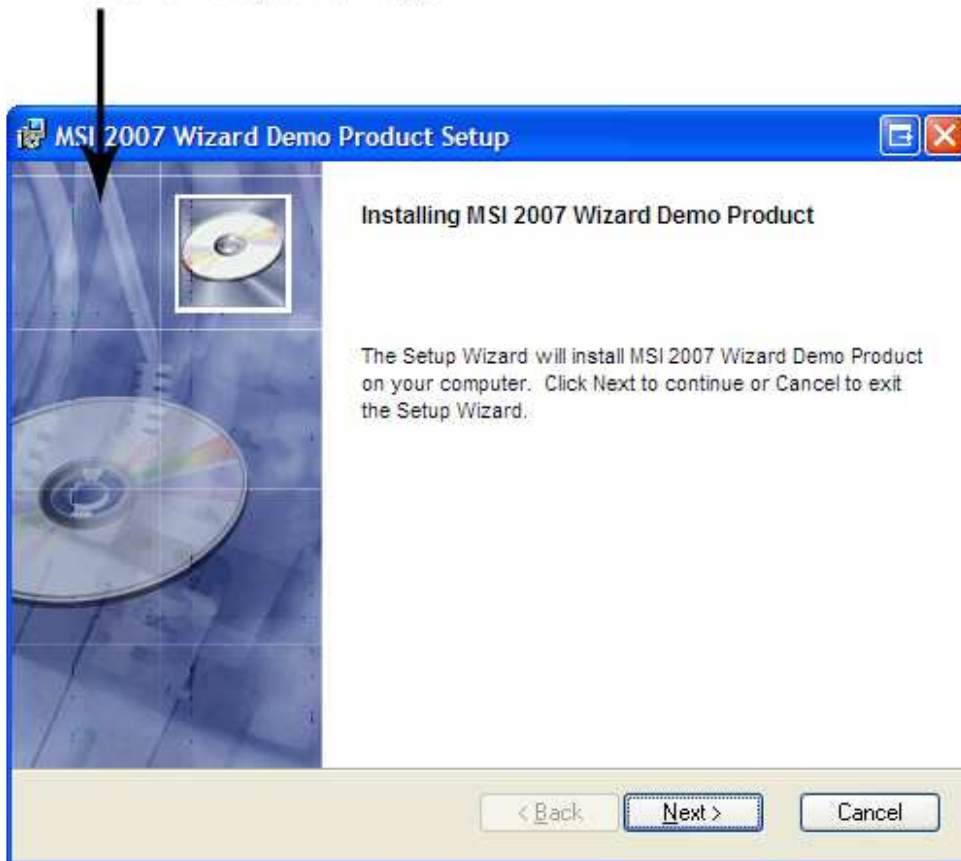
Enter a path to or Browse for a custom bitmap to display on the side of the Welcome Dialog and Exit Dialog.

This image should be 501x314 pixels in size. This fits the inside of the whole dialog, not just the side. If the custom image is not the correct size, it will be stretched or compressed to fit the dialog box.

An example Side Image bitmap is installed in the "Sample Dialog Bitmaps" folder in the main Deployment Wizard installation directory.



This is the Dialog Side Image

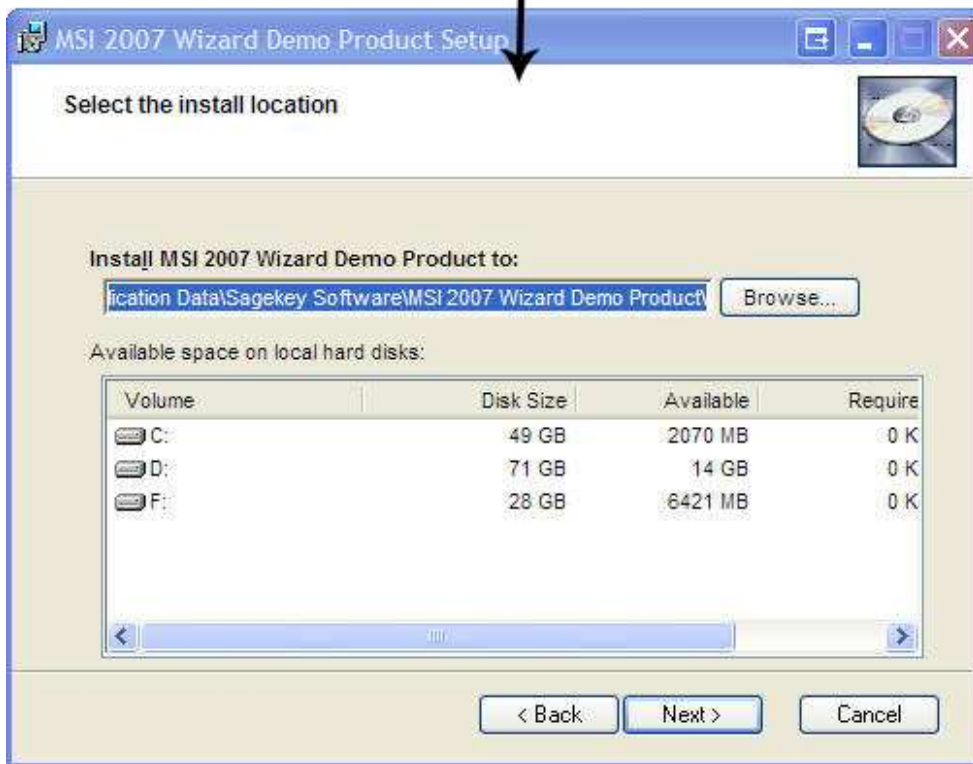


#### Dialog Top Image Bitmap

Enter a path to or Browse for a custom bitmap to display on the top of the installation dialogs. This image should be 500x63 pixels in size. If the custom image is not the correct size, it will be stretched or compressed to fit the dialog box.

An example Top Image bitmap is installed in the "Sample Dialog Bitmaps" folder in the main Deployment Wizard installation directory.

This is the Dialog Top Image



## Destination Dialog Options

### SHOW DESTINATION DIALOG

Displays the destination dialog and allows the end user to select the path where they want the installer to place the main application files.

### HIDE DESTINATION DIALOG

The destination dialog is not displayed to the end user so the main application is installed to the installation folder specified when the installation was built.

### DISABLE DESTINATION DIALOG

The destination dialog is displayed but the end user can not modify the installation folder specified when the installation was built.

## Finish Dialog

The user must select <FULL>, <MESSAGE> or <NONE>

There are three options for the Finish Dialog for the install.

### <FULL>

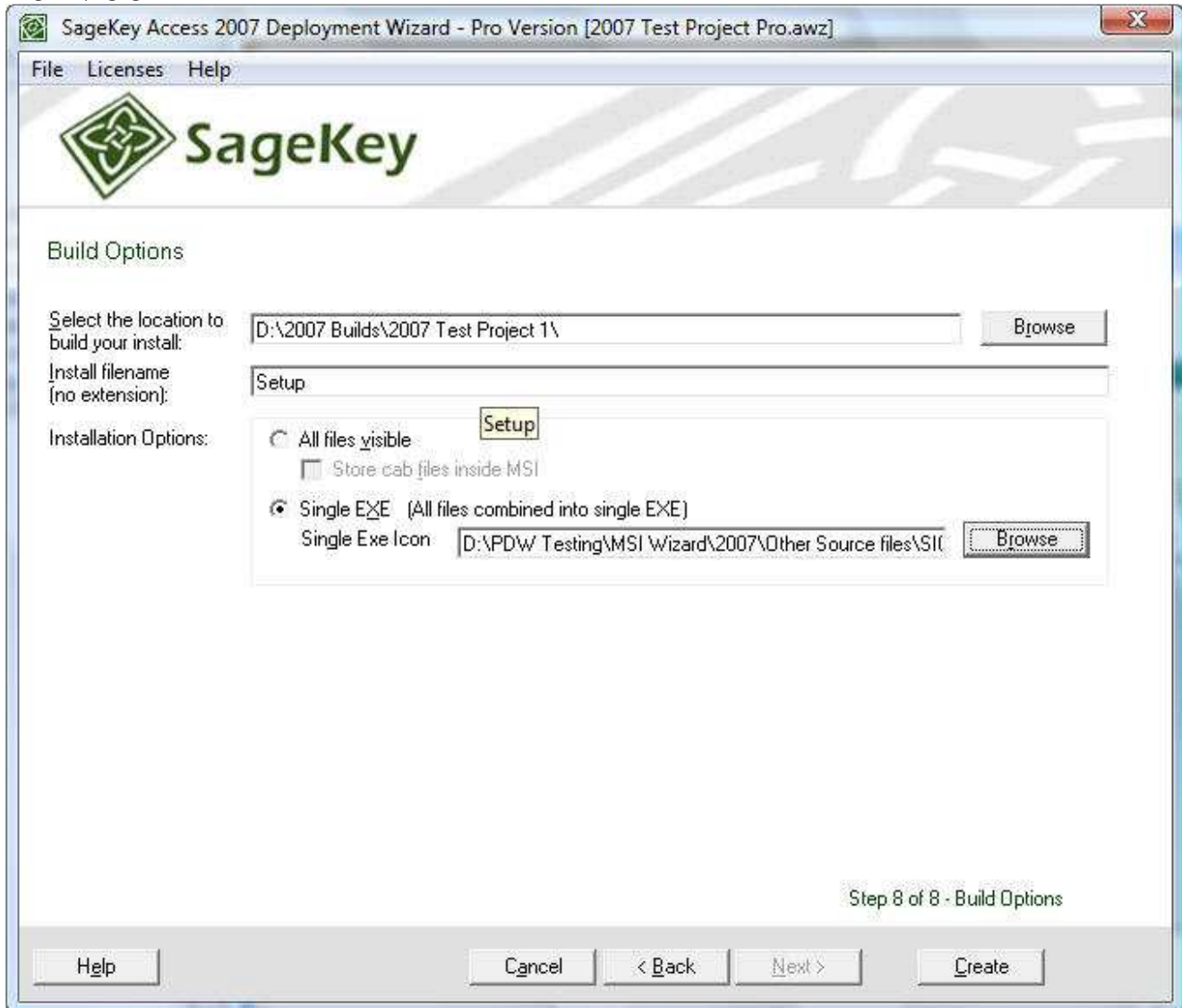
This option displays a full sized dialog that tells the user the installation is complete. This dialog will use the default top and side images and can not be set to use any custom images you have selected.

If <MESSAGE> is selected, when the install is complete the Wizard will bring up a Message Box. You can edit the message that is shown by changing the text in the Finish Message box, which is only enabled when <MESSAGE> is

|           |  |
|-----------|--|
| <MESSAGE> | selected.<br>By default the Message Box will display:<br>"Installation of ____ (Your Application Name) ____ is complete" |
| <NONE>    | No indication of the completion of the install will be displayed.  |

## - BUILD OPTIONS -

### PRO VERSION



### BUILD LOCATION:

Enter a path to or Browse to select where the Wizard will build the install. The install will be built here within a folder named distribution.

### Install File Name

Type the name you wish to use for the main install file. Do not type an extension for this file, it will

be added by the Wizard.

## Installation Options

### **All Files Visible**

Select this option if you wish to have the install built without compressing the files into a Single EXE. This give you the opportunity to add or edit files.

### **STORE CAB FILES INSIDE MSI**

Check this box to store your CAB files within the MSI

### **Single EXE**

Select this option to have all the installation files compressed into a single executable (EXE).

### **SINGLE EXE ICON**

If you wish to use a custom icon for your EXE, click 'Browse' to locate the file, or type in the path to your Single EXE Icon file.

## Create

Click the Create Button and the Wizard will verify if all the properties look correct, if so, it then builds the Install.

